

Instructions for use



Hold the button. During the clamping process, all display indicators should light up to visually check their operability. Also at this time, the device is self-tested and the initial pressure is set.



After that, the display will light 0 (or set the excess of the site). The button can be released, the altimeter is ready for operation.

Turning off the device



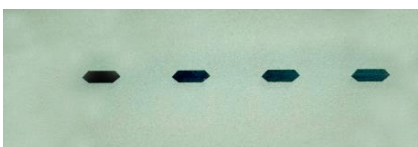
The altimeter can be switched off only when in the "on the ground" mode. After turning on the device, it will automatically turn off after 14 hours, provided that it is in the "on the ground" mode.



To turn off the altimeter manually

- it is necessary to hold down the button to start scrolling through the menu items. After waiting for the "OFF" element, it is necessary to release the button, after which the protection against accidental shutdown will start: by analogy with the insuring device, the numbers "3333" "2222" "1111" will begin to appear, which must be "extinguished" by briefly pressing the button.

View the current battery charge.



To view the current charge, you must press the button and wait for the dashes showing the current charge to appear. If you continue to hold the button, the menu items will be scrolled

Turn on / off the backlight



To turn on the backlight, you must hold the button and wait for the word "led" to appear, at the moment of its appearance, the button must be released. Similarly, to turn off

Log-book



To view the logbook, you need to hold down the button and wait for the word "log" (the item is available only in the "on-ground" mode), at the moment of its appearance, the button must be released

The show of hopping statistics will begin



JMPS - the total number of jumps



SPD - maximum speed leap



(FFT) - Freefall time



Altitude-opening height.

Attention!

Parachuting is a hazardous activity that can result in injury or death. Altimeter is a mechanical (electronic) device and can fail, even with proper design, production, testing, maintenance and use. Do not rely on the altimeter for your safety. Your altimeter should only be considered as an aid in altitude checks. Failure can occur both during ascent and descent — visual height control in combination with the altimeter should be used. If you have any problems or questions, please report them through any available channels (email, social network, feedback form)...). We will do our best to make sure that you use your altimeter to the maximum.

Editing the JAMP counter



To edit the jumping counter, you must hold the button and wait for the "log" to appear (the item is only available in the "on the ground" mode), at the moment of its appearance, the button must be released



Then, when the "JMPS" item appears, you must press the button again. If you want to increase the number of jumps - you need to release the button when the word "Add" appears. The hop counter will start flashing - press / hold the button to set the desired number of jumps. After setting the desired value, do not touch the button, the counter stops flashing and the altimeter switches to the "on the ground"

If you want to reduce the number of jumps - you must release the button when the word "Sub" appears. The hop counter will start flashing - press / hold the button to set the desired number of jumps. After setting the desired value, do not touch the button, the counter stops flashing and the altimeter switches to the "on the ground"

Setting the site elevation



The excess can be set in the range from - 300m to 300m. To set the elevation, press the button and wait for "SET0" to appear, at the moment of its appearance, the button must be released. The zero (or the current elevation of the area) on the screen will start flashing. To increase the excess by 5 m, you need to briefly press the button, when you press the button, the excess will start to change quickly.



When reaching a height of 300m, pressing a button will change the elevation sign by - 300m, further pressing the button will allow you to set the necessary negative excess. After setting the desired value, the button must be released and wait until the indicator stops blinking. The altimeter will go into the measurement mode of "on the ground", the current elevation of the site

Low battery indicator



When the charge level reaches 35%, the "LB" (Low Battery) indicator lights up. If possible, the device should be charged to extend the life of the battery. Before connecting to the charger, the altimeter must first be turned on.

Software Update

Windows

To update the software, the altimeter should be connected to the computer via the USB cable, having previously turned on. Then it is necessary to hold the button for a long time, until the battery indicator turns off. After that, the button must be released. The computer detects a USB flash drive SKYER_FLASH.

The old firmware.bin firmware must be uninstalled, then copy a new firmware file instead.

Mac

Download and run the update file from our website. Open the Finder. Enter the directory / Programs / Utilities (/ Applications / Utilities) and double-click the Terminal application. Type "rm / Volumes / SKYER_FLASH / firmware.bin" into the terminal. Then enter "cd ~ / Downloads" Copy the downloaded firmware with the command "cp skyer_firmware.bin / Volumes / SKAER_FLASH"

Description of the operation modes of the device "on the ground"

"On the ground"

While in the standby mode (ON EARTH), the altimeter displays 0 (or the current elevation of the site) and performs zero-pressure auto-tuning, waiting for take-off. After 5 minutes, the display turns off to save energy (it will automatically turn on during takeoff). The take-off is recorded when the average speed in 8 seconds exceeds 2 m / s. After that, the altimeter records the pressure, which was 2 minutes earlier, when it was guaranteed to be on the ground.

"Rise"

In take-off mode, the altitude is displayed at 5 m, the items "log", "OFF", "SET0" disappear from the menu - you can turn it off only when on the ground. The altimeter switches to "on the ground" mode if the following conditions are met: - altitude less than 200 m - average descent rate per minute 0 m / s If the aircraft remains at a height of more than 200 m for a long time, the device is not reset to zero.

"fall"

With a free fall, the altitude is displayed in increments of 50 m for easy reading of the altitude. In this mode, the button is locked, pressing it will have no effect

"Piloting"

After opening the parachute, the altitude is displayed in increments of 5 m. In this mode, the button is locked, pressing it will have no effect